



Certificate of Analysis

CANNABUSINESS LABORATORIES, LLC

Customer:

Pharm CBD
2580 Highway 42 West
Bedford, KY 40006

Received Date **6/18/2025**

COA Released **6/20/2025**

Comments

Sample ID **251218027**

Order Number **CB251218016**

Sample Name **23334-1 (Retest)**

External Sample ID

Batch Number **23334**

Product Type **Other**

Sample Type **Other**

CANNABINOID PROFILE

Analyte	LOQ (%)	% Weight	mg/g
CBC	0.01	0.135	1.351
CBD	0.01	4.222	42.22
CBDa	0.01	ND	ND
CBDV	0.01	0.015	0.153
CBG	0.01	0.053	0.530
CBGa	0.01	ND	ND
CBN	0.01	0.020	0.202
d8-THC	0.01	ND	ND
d9-THC	0.01	0.203	2.035
THCa	0.01	ND	ND
Total Cannabinoids		4.649	46.49
Total Potential THC		0.203	2.035
Total Potential CBD		4.222	42.22
Total Potential CBG		0.053	0.530

Ratio of Total Potential CBD to Total Potential THC **20.80 : 1**

Ratio of Total Potential CBG to Total Potential THC **0.26 : 1**

**Total Cannabinoids refers to the sum of all cannabinoids detected.*

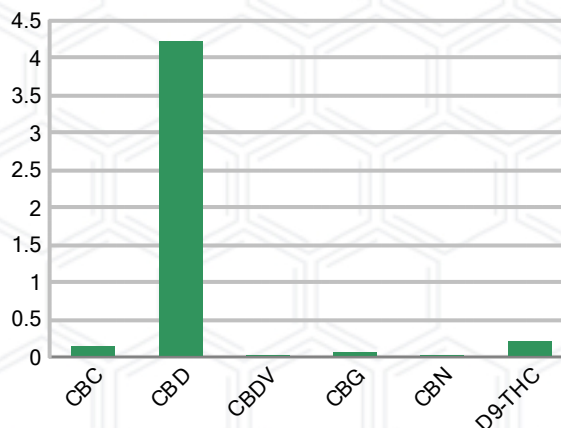
**Total Potential CBD = (0.877 x CBDa) + CBD. *Total Potential THC = (0.877 x THCa) + THC. *Total Potential CBG = (0.877 x CBGa) + CBG.*

**Total Potential THC/CBD are calculated to take into account the loss of an acid group during decarboxylation.*

SAMPLE IMAGE



CANNABINOIDS % Weight



J. Hobgood
Laboratory Manager

SIGNATURE

Jamie Hobgood

LABORATORY MANAGER

6/20/2025 3:53 PM

DATE

This product has been tested by CannaBusiness Laboratories using validated testing methodologies and a quality system. Values reported relate only to the product tested. CannaBusiness Laboratories makes no claims as to the efficacy, safety, or other risks associated with any detected or non-detected levels of any compounds reported herein. This Certificate shall not be reproduced except in full, without the written permission of CannaBusiness Laboratories. Photo is of sample received by the lab and may vary from final packaging. The results apply to the sample as received.





Certificate of Analysis

CANNABUSINESS LABORATORIES, LLC

Customer

Pharm CBD
2580 Highway 42 West
Bedford, KY 40006



Sample Name: 23334-1 (Retest)

Sample ID: 251218027

Order Number: CB251218016

Product Type: Other

Sample Type: Other

Received Date: 6/18/2025

Batch Number: 23334

COA released: 6/20/2025 3:53 PM

Potency (mg/g)

Date Tested: 6/20/2025

Method: CB-SOP-028

Instrument:

0.203 %	4.222 %	4.649 %	46.49 mg/g
Total THC	Total CBD	Total Cannabinoids	Total Cannabinoids

Analyte	Result	Units	LOQ	Result	Units
CBC (Cannabichromene)	0.135	%	0.010	1.351	mg/g
CBD (Cannabidiol)	4.222	%	0.010	42.22	mg/g
CBDa (Cannabidiolic Acid)	ND	%	0.010	ND	mg/g
CBDV (Cannabidivarin)	0.015	%	0.010	0.153	mg/g
CBG (Cannabigerol)	0.053	%	0.010	0.530	mg/g
CBGa (Cannabigerolic Acid)	ND	%	0.010	ND	mg/g
CBN (Cannabinol)	0.020	%	0.010	0.202	mg/g
D8-THC (D8-Tetrahydrocannabinol)	ND	%	0.010	ND	mg/g
D9-THC (D9-Tetrahydrocannabinol)	0.203	%	0.010	2.035	mg/g
THCa (Tetrahydrocannabinolic Acid)	ND	%	0.010	ND	mg/g



FJLA
Testing
Accreditation #109588

Laboratory Manager

Jamie Hobgood

SIGNATURE

6/20/2025 3:53 PM

DATE

NT = Not tested, ND = Not detected; LOQ = Limit of Quantitation; <LOQ = Detected; >ULOL = Above upper limit of linearity; CFU/g = Colony forming units per 1 gram; TNTC = Too numerous to count

This product has been tested by CannaBusiness Laboratories using validated testing methodologies and a quality system. Values reported relate only to the product tested. CannaBusiness Laboratories makes no claims as to the efficacy, safety, or other risks associated with any detected or non-detected levels of any compounds reported herein. This Certificate shall not be reproduced except in full, without the written permission of CannaBusiness Laboratories. Photo is of sample received by the lab and may vary from final packaging. The results apply to the sample as received.